

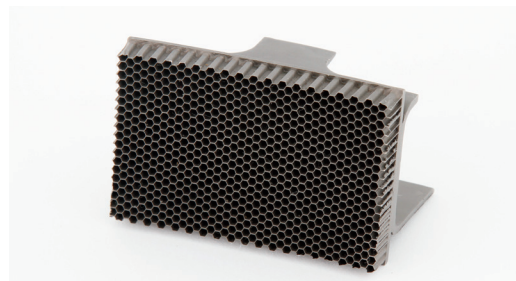
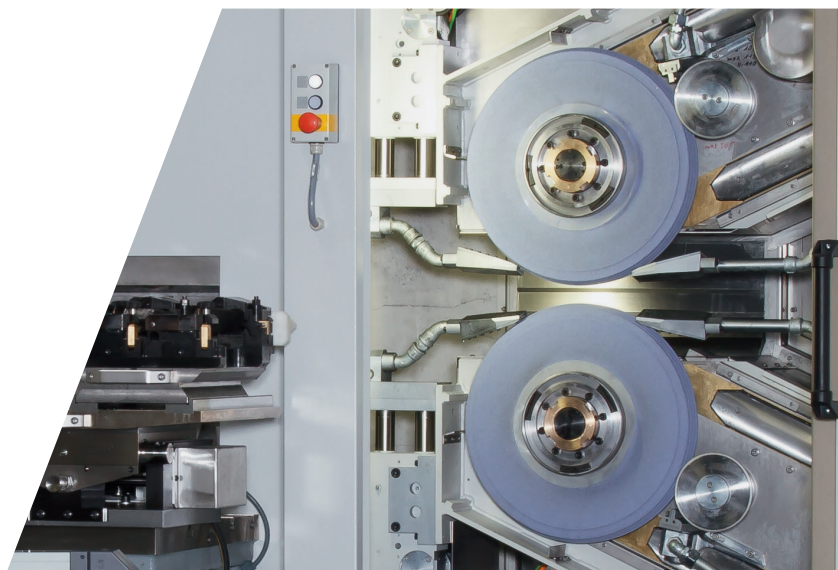


microCut

CREEP-FEED GRINDING MACHINE



WORK PIECES UP TO
700 × 640 × 100 MM [L × W × H]



COMPACT SOLUTION FOR CREEP-FEED GRINDING

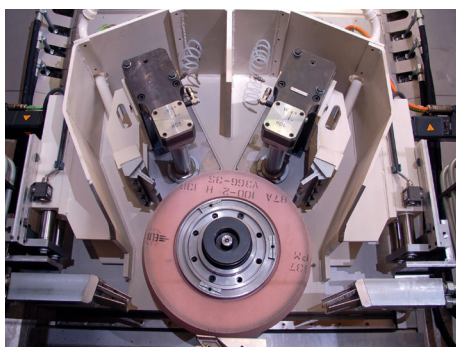
- ✓ Compact traveling column machine
- ✓ Single or double spindle solution
- ✓ High material removal rate
- ✓ Long-term precision
- ✓ Ideal for cell layout

PRODUCTIVE CREEP-FEED GRINDING AT SMALLEST FOOTPRINT

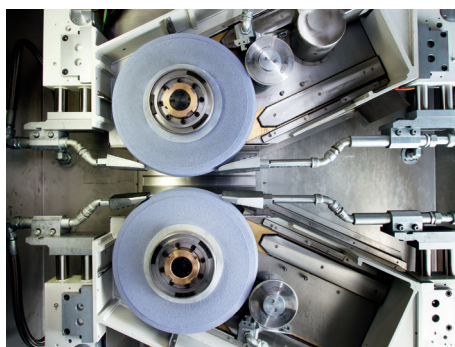


microCut – COMPACT SOLUTION FOR CREEP-FEED GRINDING

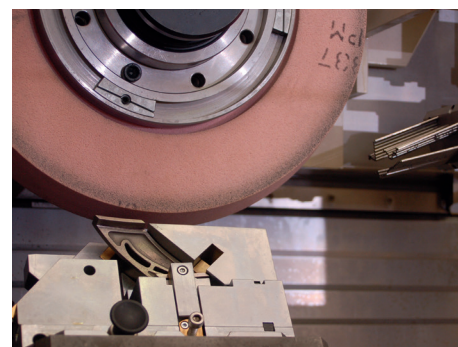
- ✔ Compact traveling column machine
- ✔ Pick-up machine with attached electrical cabinet (250)
- ✔ Linear guideways for all axes are preloaded
- ✔ Rigid grinding spindle for high material removal capacity
- ✔ Grinding wheel attachment with cone or HSK
- ✔ Automatic tool changer
- ✔ Optional index table for loading / unloading during grinding
- ✔ Ideal static and dynamic stiffness
- ✔ Head mounted roll dressing unit
- ✔ Horizontal and vertical indexing table as option
- ✔ Sinumerik 840 D Solution Line
- ✔ Grinding wheels: Corundum, CBN and diamond grinding wheels



Dual head-mounted roll dressing unit



Double-spindle solution



Vane Grinding

TECHNICAL DATA

microCut	250	320	320 DS	520
Drive system	Ball screw	Ball screw	Ball screw	Ball screw
Grinding width [mm]	300	400	220	600
Grinding length [mm]	430	700	900	700
Distance spindle center to table [mm]	400 / 600	700	–	640
Spindle power [kW]	22 / 37 / 52	37 / 52	37 / 52	37 / 52
Spindle cone [mm]	75	75 / 90	75 / 90	90 / 125, HSK 100 / 125
Grinding wheel [mm]	400 × 100 × 127	500 × 100 × 203.2	500 × 100 × 203.2	500 × 160 × 203.2

GET IN TOUCH WITH US TODAY
TOGETHER WE WILL FIND A SOLUTION
FOR YOUR REQUIREMENTS

ELB-SCHLIFF Werkzeugmaschinen GmbH

Phone: +49 6028 408 0

info@elb-schliff.de

www.elb-schliff.de